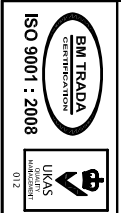
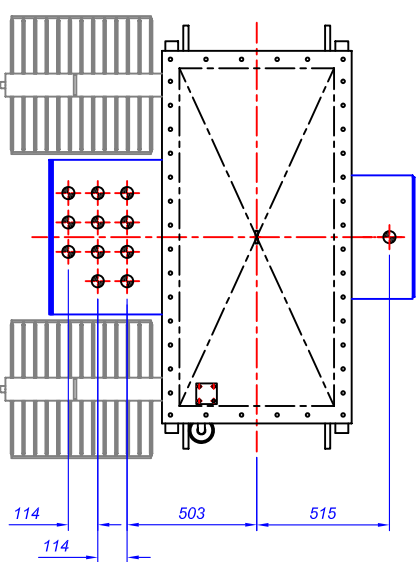


ITEM	DESCRIPTION
1	HV CABLE BOX 3 POLE 1 GLAND (TERMINATION KIT REQD)
2	LV CABLE BOX 4 POLE 11 GLAND AIR FILLED
3	TRANSFORMER LIQUID FILLER PLUG
4	THERMOMETER POCKET
5	LIQUID LEVEL GAUGE
6	JACKING CHANNELS
7	EARTHING TERMINAL (ONE EACH SIDE)
8	SKID UNDERBASE C/W HAULAGE HOLES
9	MAIN LIFTERS
10	SILICA GEL BREATHER (SUPPLIED LOOSE)
11	TAPPING SELECTOR CONTROL HANDLE
12	RATING AND DIAGRAM PLATE
13	DN25 DRAIN VALVE
14	RADIATORS

BOWERS JOB No.	
BOWERS STOCK No.	1250 KVA
OUTPUT	11000 / 433
VOLTAGE RATIO	65.6 / 1667
AMPERES	3
PHASES	50Hz
FREQUENCY	Dyn11
VECTOR SYMBOL	

ESTIMATED WEIGHTS	
CORE AND WINDINGS	2350 KG
COOLING LIQUID	820 LTRS
TOTAL WEIGHT	4000



This drawing is COPYRIGHT and the property of Bowers Electrical Ltd. It must not be copied (in whole or in part) without prior written consent of the company.

TOLERANCE UNLESS OTHERWISE STATED:  
 ± 0.5mm FOR DIMENSIONS UP TO 250mm  
 ± 1.0mm FOR DIMENSIONS UP TO 1000mm  
 ± 2.0mm FOR DIMENSIONS OVER 1000mm.

Rev/No	Revision note

Date	Signed	Ckd.

**Bowers**  
 Electrical Ltd  
 Heaton Gate Road, DRYTS TQX  
 Tel: 01773 531531 Fax: 01773 716171  
 Email: enquiries@bowerselk.co.uk

Drawn by: A WILCOXSON  
 Checked by: C WHEESE  
 Approved by: G WESBURY  
 GENERAL ARRANGEMENT OF  
 1250KVA OLAN 11000/433V  
 Dyn11 BEST TRANSFORMER

DRG No.	Orig. Job No.	Date	Dwg. Size
BE5525	2810/11	28/10/11	A2
Scale	Revision	Sheet	
1:15	0	1/1	